

LOGIQ Book

High Performance Hand-carried Ultrasound



GE Medical Systems
Ultrasound

gemedical.com

LOGIQ Book

Performance



imaging in a hand-carried scanner



The LOGIQ Book hand-carried ultrasound system delivers the convenience and versatility of a hand-carried system with the performance expected from GE ultrasound technology.

LOGIQ Book is the newest member of the LOGIQ family of ultrasound scanners. Like its full-size relatives – LOGIQ 9, LOGIQ 7 and LOGIQ 5 – the LOGIQ Book is based on GE's advanced TruScan Architecture. It delivers the same functionality, raw data processing and archival options found on every LOGIQ scanner, except now in an ultra-portable design.

As with the rest of the LOGIQ family, LOGIQ Book is complemented by the unmatched support and investment security that only a world leader in diagnostic imaging can provide.

LOGIQ Book with TruScan Architecture is loaded with high-end features:

SmartScan

- Automatic Optimization minimizes operator-dependent variability to improve image quality, examination consistency and overall productivity
- Easy3D makes out-of-plane imaging simple
- Calculation packages for OB, gynecology, vascular, renal and real-time auto Doppler applications
- Image archive stores over 4,000 images or cine loops

ComfortScan

- Integrated 10.3 inch, high-resolution, color LCD for easy viewing and accurate diagnostic interpretation
- Common LOGIQ family user interface

TruAccess

- Images are stored with raw data allowing the application of real-time scanning techniques to stored images
- TruAccess data is stored in a DICOM format that enables images and information to be shared with other scanners, workstations and archives

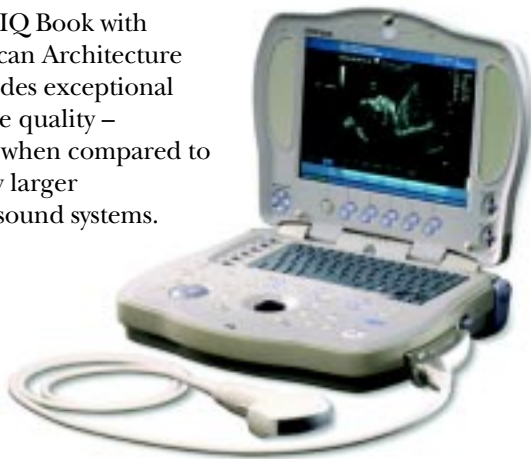
TruScan Architecture



Software-intensive TruScan Architecture delivers unsurpassed computational power, image processing capabilities, workflow flexibility and upgradeability

LOGIQ Book

LOGIQ Book with TruScan Architecture provides exceptional image quality – even when compared to many larger ultrasound systems.



Combined with high-performance transducers, LOGIQ Book brings the convenience of hand-carried ultrasound to a wide range of clinical applications.



3C-RS

Abdominal, OB/GYN



8C-RS

Pediatrics, Neonatal



10LB-RS

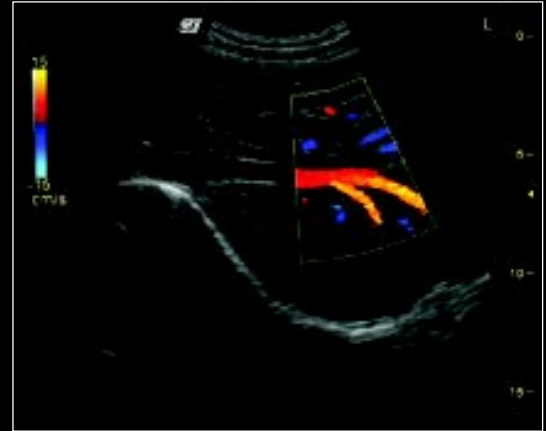
**Vascular, Interventional,
Small parts, Musculoskeletal**



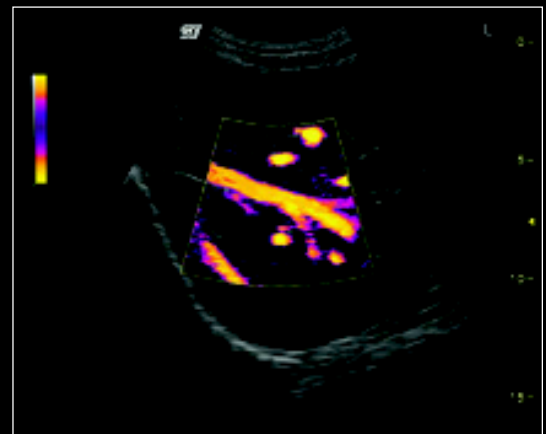
E8C-RS

OB/GYN

Best in class in



Color Doppler flow within normal liver

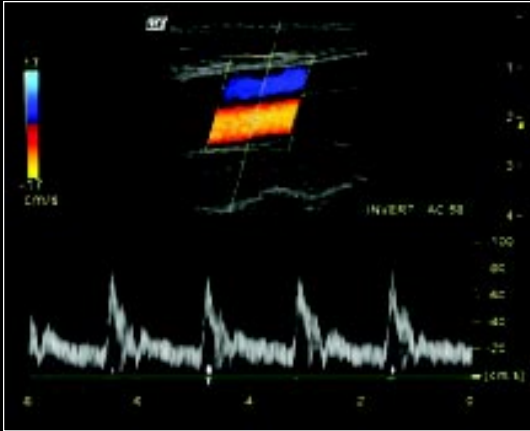


Power Doppler Imaging (PDI) showing normal liver flow

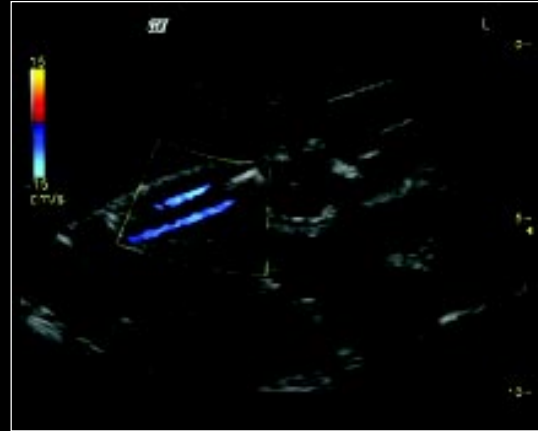


Gallbladder sludge with sludge ball

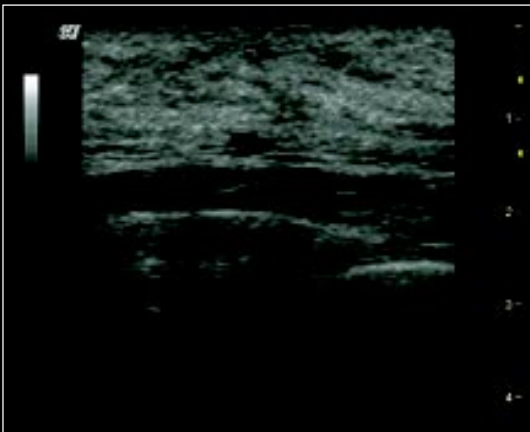
image quality, world class versatility



Color Doppler of carotid artery with Spectral Doppler display



27-week fetal tibial artery flow – illustrating Color Doppler sensitivity



Multiple focal zones used to image a benign breast cyst in a 30-year old woman



30-week fetal umbilical cord flow



25-week fetal adrenal gland demonstrating small structure definition



Color Doppler flow of adult kidney

Ultraportable design removes constraints



LOGIQ Book

Benefits of traditional ultrasound systems

LOGIQ Book's hand-carried design allows the power of advanced ultrasound imaging to be deployed throughout the healthcare facility and beyond.

Transported by hand or by cart, the LOGIQ Book can be taken to the patient bedside, emergency department, surgery suite, clinic or wherever ultrasound imaging is required.

Extended-life batteries provide up to one hour of continuous scanning or five hours in Stand-by mode. System boot-up from Stand-by is less than 10 seconds, so there is never a delay when you need to conduct an urgent examination.

LOGIQ Book incorporates DICOM compliant wireless LAN – enabling connectivity on the go.



Easy-to-use clips secure LOGIQ Book to its cart

Custom, ergonomic cart with integrated printer tray, and gel and transducer holders



Hand-carried ultrasound redefined



Innovations backed by complete support.

LOGIQ Book is another example of the constant stream of innovations from the scientists, engineers and sonographers at GE Medical System's Ultrasound business – innovations that provide the superb image quality, clinical utility and department-wide productivity that you demand.

World-class support – Like all of our imaging systems, LOGIQ Book is backed by the world-class service, financing, applications training and continuing education that GE customers have long appreciated.

Unsurpassed quality – You have the assurance of knowing that your GE equipment is the product of Six Sigma processes, a philosophy of quality in the design and manufacture of our products that allows us to meet your most exacting performance and reliability expectations.

Investment security – GE Medical Systems is a world leader in diagnostic imaging products and support. For more than 100 years, healthcare providers worldwide have relied on GE for imaging technology, services and productivity solutions. No matter what challenges your healthcare enterprise faces, you can always count on GE to help you deliver exceptional care.

Ask your GE representative for all the latest details or visit our website today – www.gemedical.com



GE Medical Systems
We bring good things to life.

General Electric Company reserves the right to make changes in specifications and features shown herein, or discontinue the product described at any time without notice or obligation. Contact your GE Representative for the most current information.

© Copyright 2002 General Electric Company
02-7999 Printed in USA

Internet – gemedical.com
GE Medical Systems – Americas: Tel: (866) 344-3633
P.O. Box 414, Milwaukee, Wisconsin 53201 U.S.A.

GE Medical Systems – Europe: Tel: (49) 212 2802-0
Solingen, Germany

GE Medical Systems – Asia:
Shanghai, China – Tel: (86) 21-52080200