

# High Versatility without Compromises

**My**Lab<sup>™</sup>25





No Compromises

- > Premium Performance and Compact Design
- > Lightweight with Advanced Ergonomics
- > Digital Archiving and Full Connectivity



## Premium performance with portability >MyLab25 dynamic design is now a reality with MyLab25.

The sophisticated architecture of MyLab25 is capable of satisfying all your diagnostic requirements and, thanks to its revolutionary portability, you now have ultrasound wherever and whenever you need. The latest generation of digital beamformer, matched to a user-friendly interface, is at the heart of the MyLab25 platform. Coupling this advance with the most up-to-date multi-frequency probes makes MyLab25 a real Echo-Lab for both adults and pediatric scanning.

MyLab25, weighing less than 9 kilos (20 pounds), combines flexibility with portability to allow you to image all your patients without compromise. The premium console performance you expect is delivered via an advanced ergonomic interface and full-size keyboard. The imaging experience is further enhanced by the large 15" high resolution TFT flat screen that allows 170° viewing angles.

A wide selection of accessories is offered to further satisfy every requirement.

## >MyLab25 digital premium performance

With the aid of B-Mode, Tissue Enhancement Imaging (TEI™- harmonic modality), high-frame-rate Color and Power Doppler, M-Mode, Pulsed Wave and directional Continuous Wave Doppler, MyLab25 will consistently deliver optimal imaging resolution for all patients.



Innovative



# No Compromises

## >Complete and Versatile

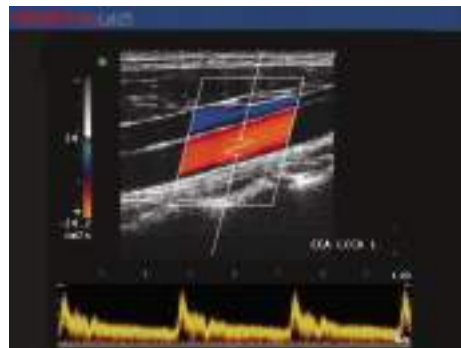
MyLab25 represents a revolutionary approach to the General Imaging practice. The new extended platform is integrated in very compact dimensions and is able to deliver premium performances in a wide range of applications: Abdominal, Vascular, Small Parts, Cardiac, Musculoskeletal, Obstetrics and Gynecology. The advanced design and ergonomics make MyLab25 the best choice for private labs, any hospital department, emergency and point of care.

## >A Complete Family of Broadband probes

High density multi-frequency convex, linear and phased array, as well as endocavity and special-purpose probes allow you to meet any clinical requirement, from newborn to adult. All probes and biopsy kits are lightweight and ergonomically designed to deliver premium performance in every situation. Special technologies and packages offer a complete and advanced solution for cardiology.



Hepatic Hemangioma



Carotid Artery



Uterus Endovaginal Scan



- > Convex and Endocavity Probes
- > Phased Array and Linear Probes
- > Advanced Application Packages



## >Measurement, Annotation and Reports Package

As the extreme system flexibility in terms of features and applications, MyLab25 also includes an extended measurements and reports package.

Each report page, dedicated to the single application, is complete and flexible, allowing the operator to choose his own structure and giving the possibility to export data in Windows® or PACS environments.

## >Contrast Tuned Imaging (CnTI™)

Developed by Esaote, CnTI™ provides high performance contrast enhanced ultrasound imaging with second-generation contrast media. Thanks to a RealTime Low-MI technology, high quality images and video clips can be easily recorded, increasing diagnostic confidence of the operators even in the most difficult situations. A wide choice of probes compatible with this technology enlarges the range of potential applications.



Contrast Enhanced Ultrasound - Transplanted Kidney Vascularization



# No Compromises

## >BioLab Data Management

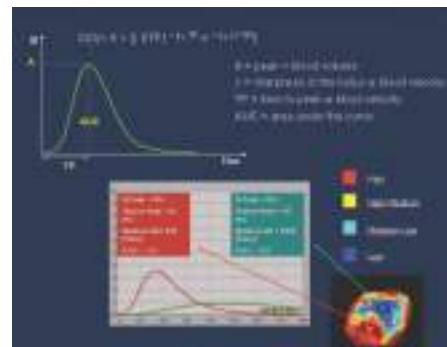
The new embedded data management software, common to the new MyLab Platform, allows images and video clips to be stored in real time, reviewed, exported in different formats and finally printed out on different DICOM®/PC Printers.

## >BioPACS™ - Org@nizer™

The data acquired with MyLab25 can be transferred to BioPACS/Org@nizer mini-PACS architecture in a single-server or client-server configuration. By these means, a complete DICOM® archive is available for reviewing, measuring, comparing and printing all clinical data.

## >Quantification Tools

Impressive results obtained in Contrast Enhanced Examinations performed with MyLab25 can be furtherly enhanced by advanced analysis tools. Through post-processing computation, quantitative parameters assessment and full map parametric graphs are available, increasing the clinical value of the examination for a precise and detailed final diagnosis.



# Ultrasound wherever you are whenever you need it



Dedicated to your MyLab25.  
Practical tools to go wherever you need it.



Flexible







- > Digital Archive
- > Patient Management
- > Advanced Research Tool



## >CD Writer

The first compact system to feature a CD writer, MyLab25 offers a fast and easy solution to store images and clips. The Windows® XP operating system allows this capability using AVI and BMP file formats for storing still images and clips which can be read either from its internal HD or any external PC.

## >USB Pen Drive

The new USB pen drive is a simple and easy way to store examinations. It can be used as an external removable HD and can be simply connected to any external PC when using AVI file format for clips and BMP file format for still images. It represents a comfortable tool to move the personal user presets from one system to another.



Interactive



## MyLab25



EN 46001 ISO 9001  
ISO 13485



Windows® is a registered trademark of Microsoft Corporation

DICOM® is a registered trademark of the National Electrical Manufacturers Association



0051

### ESAOTE S.p.A.

Headquarters: Via Siffredi, 58 16153 Genova, ITALY Phone +39-010-6547.1 Fax +39-010-6547.275

International Activities: Via di Caciolle, 15 50127 Firenze, ITALY, Phone +39-055-4229.1, Fax +39-055-4229.208, E-mail: international.sales@esaote.com

[www.esaote.com](http://www.esaote.com)

| France   | Germany   | Russian Federation and CIS  | Spain  | USA  | China  | The Netherlands   | United Kingdom  |
|--|---|---|--|--|--|---|---|
| <b>Esaote France Sarl</b>  | <b>ESAOTE BIOMEDICA</b>   | <b>ESAOTE S.p.A.</b>  | <b>ESAOTE ESPAÑA S.A.</b>  | <b>BIOSOUND ESAOTE Inc.</b>  | <b>ESAOTE CHINA Ltd</b>  | <b>PIE MEDICAL</b>  | <b>BRACCO UK</b>  |
| 22, rue Pierre Grange<br>94120 Fontenay-sous-Bois<br>Tel. (33-1) 48712525<br>Fax (33-1) 48713630<br>e-mail: esaote.france@wanadoo.fr | Deutschland GmbH<br>Hanns-Braun-Straße, 50<br>85375 Neufahrn bei Freising<br>Tel. (49-1805) 372683<br>Fax (49-81) 6561820<br>e-mail: esaote@esaote.de | Khlebnij per. 27<br>121069 Moscow<br>Tel. (7-095) 2321833<br>Fax (7-095) 2320205<br>e-mail: esaotemoscow@mtu-net.ru | Avda San Sebastian s/n<br>08960 Sant Just Desvern<br>Barcelona<br>Tel: (34-93) 473.2090<br>Fax: (34-93) 473.2042<br>e-mail: info@esaote.es | Biosound Esaote Inc.<br>8000 Castleway Drive<br>Indianapolis<br>Indiana 46250-0858<br>Tel. (1-317) 849-1793<br>Fax (1-317) 841-8616<br>e-mail: biosound@biosound.com | Unit 1903-5, 19/F, Cosco Tower<br>Grand Millennium Plaza<br>No. 181-183 Queen's Road Central<br>Hong Kong<br>Tel. (85-2) 25458386<br>Fax (85-2) 25433068<br>e-mail: esaote@esaotechina.com | Benelux B.V.<br>Philipsweg, 1<br>6227 AJ Maastricht<br>Tel. (31-43) 3824.600<br>Fax (31-43) 3824.601<br>e-mail: info@pie.nl | Bracco House<br>Mercury Park, Wycombe Lane<br>Wooburn Green<br>High Wycombe Bucks HP10 0HH<br>Tel. (44-1628) 851602<br>Fax (44-1628) 819317<br>e-mail: ukenquiries@bracco.com |

Specifications subject to change without notice