


GE Medical Systems Ultrasound

VIVID 3

Cardiovascular Ultrasound System

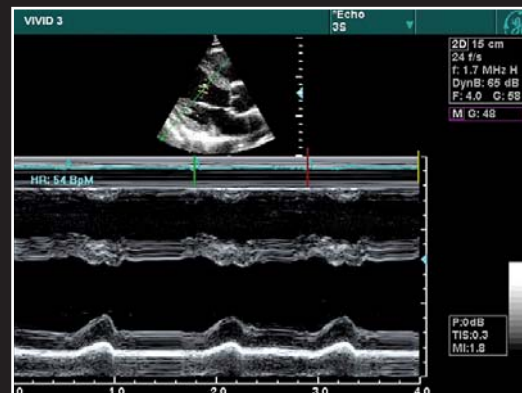


GE imagination at work 

Cardiac



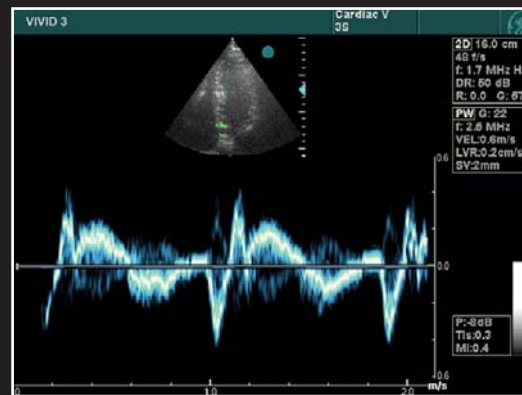
Parasternal short axis



Anatomical M-Mode of left ventricle



Spectral Doppler of the Pulmonary Vein



Spectral Tissue Doppler

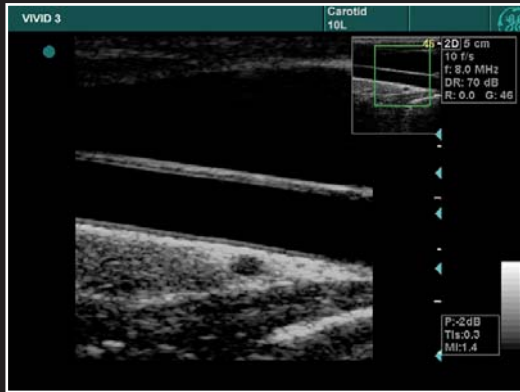


LVO Contrast
Left Ventricular opacification

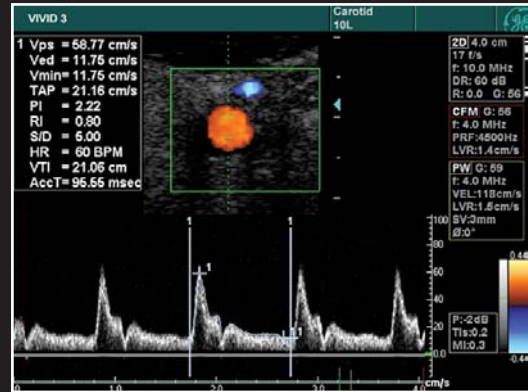


Fetal Heart

Shared Service



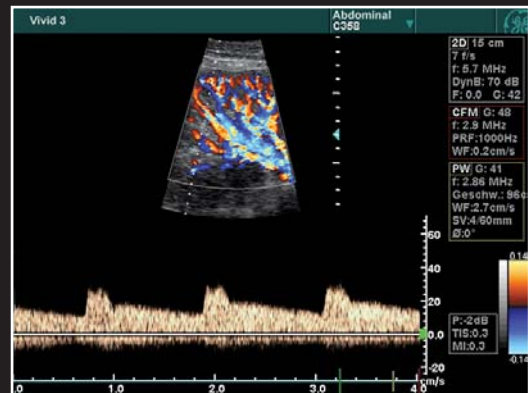
Intima anterior and posterior



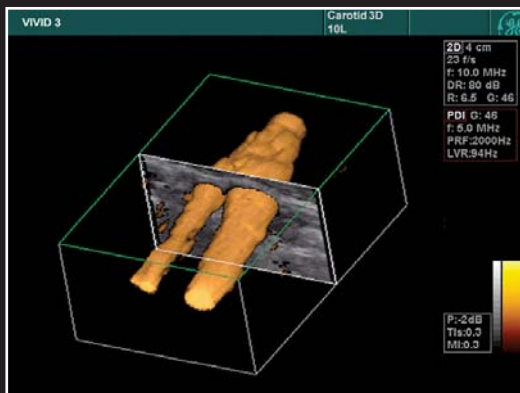
Carotid Artery with Color Doppler Triplex Mode



Normal 2D Liver



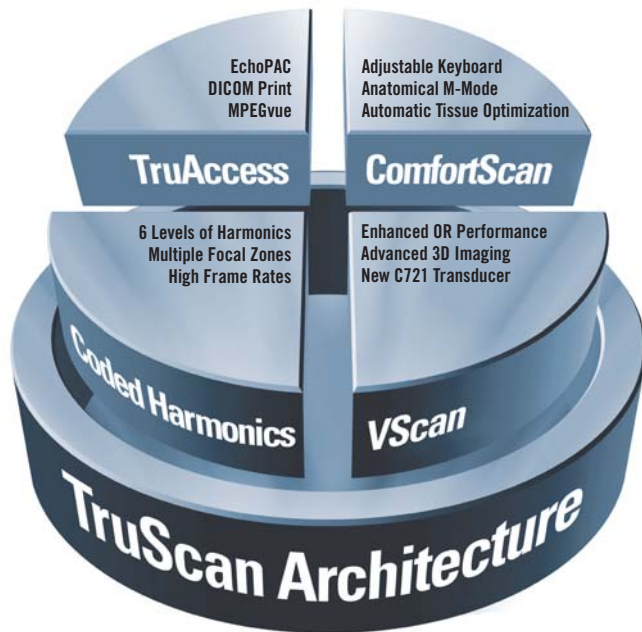
Kidney Perfusion with Spectral Doppler



Advanced Vascular 3D



Neonatal Head - Hydrocephalus



At the core of the Vivid family of cardiovascular ultrasound systems is TruScan, GE's revolutionary imaging platform.

With TruScan, the ultrasound data is digitally acquired and stored in its raw state to preserve the integrity of the data. The resulting pristine images can then be viewed, measured, optimized and analyzed at any time, without losing any of the original integrity and image quality.

An investment that grows with your clinical needs.

Scan for Complete Versatility

Up to 18 transducers offer an unprecedented range of applications, such as:

- Advanced 3D option for vascular studies.
- Enhanced OR performance with TEE and intra-operative probes, and critical time-saving features.
- Stress Echo option reduces exam times by allowing mid-exam protocol changes for shortened data analysis and report generation.
- New C721 transducer for pediatric and neonatal applications.

Coded Harmonics Image Quality

Increase your diagnostic confidence across a broad spectrum of applications with:

- Higher frame rates, dynamic range and superb color flow sensitivity.
- Dual focus and multi-focal capabilities in 2D imaging.

TruAccess for Total Data Management

Increase patient throughput with full raw data DICOM connectivity that shifts post-exam review to an EchoPAC workstation and frees your system for additional scanning.

- New MPEGvue option lets you compactly save entire patient records – including high-quality images – onto CDs that can be transferred easily and inexpensively for remote viewing on your PC via e-mail or network communication.
- Design custom report templates by selecting the format and appearance you need – even import your facility's logo.

ComfortScan for a Customized Workspace

Optimize workflow with new breakthrough features that make you more comfortable and help you perform your job faster.

- Automatic Tissue Optimization (ATO) helps you obtain quality images faster by adjusting the image settings automatically, at the touch of a button.
- Anatomical M-Mode option lets you correct for off-axis orientation when the heart is not shaped or positioned normally.

Excellence should be shared.

Should technological excellence be reserved for cardiac applications alone?

We think not.

That's why the easy-to-use Vivid 3 system brings its raw data post processing, high frame rates, high-resolution image quality, and speed of operation to all your shared service applications.

And now, with up to 18 probes, you can perform the widest array of clinical examinations yet:

- Abdominal
- Vascular
- OB/GYN
- Small parts
- Pediatrics
- Cardiac
- Intraoperative Monitoring

GE Medical Systems makes breakthrough technology easier to use every day. The economical Vivid 3 ultrasound system offers unprecedented versatility for your broad spectrum of patients.



For more than 100 years, healthcare providers worldwide have relied on GE Medical Systems for medical technology, services, and productivity solutions.

So no matter what challenges your healthcare systems faces - you can always count on GE to help you deliver highest quality healthcare.

For details, please contact your GE representative today.



GE Medical Systems Ultrasound

GE Ultraschall Deutschland GmbH & Co. KG:
Beethovenstr. 239, D-42655 Solingen
Fax: (+49) 212 28 02-28, Tel: (+49) 212 28 02-0

GE Medical Systems Ultrasound - United Kingdom:
Fax: (+44) 1234 266 261, Tel: (+44) 1234 340 881

GE Medical Systems - America:
Milwaukee, WI, USA - Fax: (+1) 262 544 33 84

GE Medical Systems - Asia:
Tokyo, Japan - Fax: (+81) 3-3223-852 4
Shanghai, China - Fax: (+86) 21-5208 0582

General Electric Company reserves the right to make changes in specifications and features shown herein, or discontinue the product described at any time without notice or obligation. Contact your GE Representative for the most current information.

© Copyright 2003 General Electric Company

Printed in Austria 299-04-U001E

Internet: www.gemedical.com